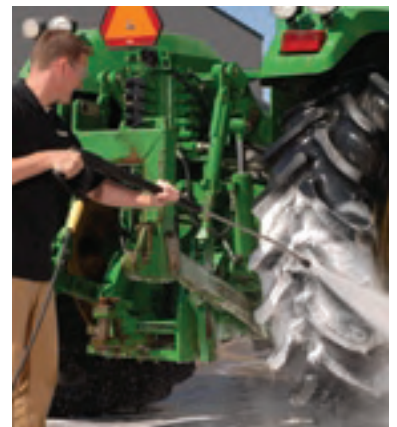
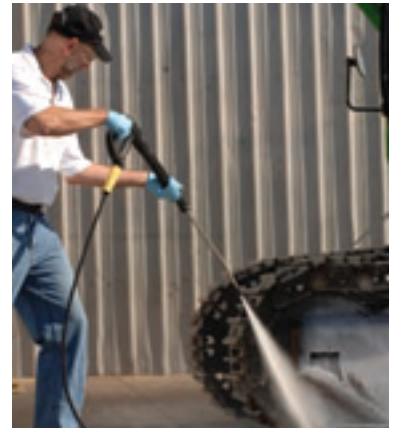


CLASSIC SERIES



Extra-Rugged, Skid-Mounted, Industrial-Duty, Gasoline-Powered Hot Water Pressure Washer



Extra-Fuel-Efficient Skid Pressure Washer with Downdraft Burner and Industrial-Duty, Direct-Drive, Axial-Style Pump

Tough enough to clean Mt. Rushmore, the HDS 1000 BE and DE are ideal for building contractors, farmers, forest services, and municipalities

- Rugged Steel Frame
- Engine Idle-Down
- Industrial Direct-Drive Axial Pump
- Super-Efficient Downdraft Burner
- Variable Pressure, Detergent, Flow

requiring high-performance machines in remote locations. Units are powered by Honda gasoline or Yanmar diesel engines complete with electric-start and engine idle-down and are equipped with Kärcher's industrial-grade direct-drive axial pump and super-efficient downdraft burner system. These machines are easy to use and include infinitely adjustable operating pressure, water volume, temperature controls, and detergent metering. Both are certified to UL and CSA standards.

TYPICAL APPLICATIONS

- Heavy Equipment
- Industrial
- Construction
- Fleets
- Waste Haulers
- Agriculture
- Tankers
- Engines

WHY KÄRCHER



Kärcher is the most trusted name in pressure washers—a fact confirmed when Kärcher was the only brand

selected to clean the famous Mount Rushmore National Monument in 2005.

Founder Alfred Kärcher invented hot water pressure washing in 1950. Today, as the world's largest manufacturer of pressure washers, Kärcher is the recognized innovative leader in the industry with nearly 300 patents.



Dimensions:
45"L x 30"W x 34"H



- Kärcher's 92% efficient **top-fired burner** delivers more heat from less fuel for the lowest operating costs in the industry
- **Detergent metering valve** allows for infinitely variable application of soap while washing in high-pressure mode
- Kärcher's high-performance direct-drive three-piston axial **high-pressure pump** features a wobble-plate design which uses fewer moving parts to maximize service life and is protected by a 5-year warranty
- 50' Kärcher **high-pressure steam hose** rated for 311°F connects to the gun with an integrated swivel connection
- **Infinitely variable** operating pressure, water volume, temperature control, and detergent metering
- Built-in variable **steam valve** creates steam spray of up to 285°F
- **ETL certified** to rigid UL-1776 and CSA 22.2 safety standards

- Heavy-gauge **steel frame** with powder coat finish for all-weather protection
- Powerful electric-start gasoline or diesel **engines** automatically idle down when trigger gun is released
- **Pulsation dampening** system absorbs vibration from the pump for smoother operation
- Safety **relief valve** protects pump from overheating and excessive pressure build up
- Rust-free 11 gal. polyethylene diesel and gasoline **tanks** for hours of uninterrupted operation
- **Warning lights** monitor fuel and scale inhibitor levels; **low-fuel shut-off** protects fuel pump
- Unsurpassed Kärcher **safety features** include pressure switches, rupture disk, low-water and low-fuel protection that shuts down burner when incoming water and fuel are insufficient or interrupted
- Ergonomically designed soft-grip Easy Press trigger **gun** minimizes operator fatigue
- Insulated Kärcher pivoting spray **wand** with a unique 25° **Power Nozzle** that delivers 40% more cleaning power due to even-impact spray pattern
- **Float tank**, with built-in anti-scale system, stops build up of mineral deposits; water **inlet filter** protects pump from debris

Model	Order No.	GPM	PSI	Engine	HP	Fuel	Pump	Ship Wt
HDS 1000 BE	1.811-935.0	2.0 - 4.0	870 - 3000	Honda	13	Gasoline	Kärcher Axial	443 lbs
HDS 1000 DE	1.811-936.0	2.0 - 4.0	870 - 3000	Yanmar	9	Diesel	Kärcher Axial	492 lbs

YOUR AUTHORIZED KÄRCHER DEALER:

Proudly Distributed By: Panhandle Powerwash Inc.
1-800-544-7119 Orofino, Id. 1-800-806-7119 Post Falls, Id.
www.panhandlepowerwash.com



Kärcher Commercial Pressure Washers
 www.karchercommercial.com
 info@karchercommercial.com
 888-805-9852 • Fax 800-248-8409